



CCL17 Polyclonal Antibody

Catalog No	YP-Ab-16094
Isotype	IgG
Reactivity	Human;Rat;Mouse;
Applications	WB; ELISA
Gene Name	CCL17 SCYA17 TARC
Protein Name	CCL17
Immunogen	Synthesized peptide derived from human CCL17 AA range: 21-70
Specificity	This antibody detects endogenous levels of human CCL17
Formulation	Liquid in PBS containing 50% glycerol, 0.5% BSA and 0.02% sodium azide.
Source	Polyclonal, Rabbit,IgG
Purification	The antibody was affinity-purified from mouse ascites by affinity-chromatography using specific immunogen.
Dilution	WB 1:500-2000, ELISA(peptide)1:5000-20000
Concentration	1 mg/ml
Purity	≥90%
Storage Stability	-20°C/1 year
Synonyms	C-C motif chemokine 17 (CC chemokine TARC;Small-inducible cytokine A17;Thymus and activation-regulated chemokine)
Observed Band	10kD
Cell Pathway	Secreted.
Tissue Specificity	Expressed at high levels in thymus and at low levels in the lung, colon and small intestine.
Function	caution:Was originally (PubMed:9521068) thought to be a ligand for CCR8.,function:Chemotactic factor for T-lymphocytes but not monocytes or granulocytes. May play a role in T-cell development in thymus and in trafficking and activation of mature T-cells. Binds to CCR4.,induction:By phytohemagglutinin (PHA) in the peripheral blood mononuclear cells and by cytokines in monocytes.,online information:CCL17 entry,similarity:Belongs to the intercrine beta (chemokine CC) family.,tissue specificity:Expressed at high levels in thymus and at low levels in the lung, colon and small intestine.,
Background	This antimicrobial gene is one of several Cys-Cys (CC) cytokine genes clustered on the q arm of chromosome 16. Cytokines are a family of secreted proteins involved in immunoregulatory and inflammatory processes. The CC cytokines are proteins characterized by two adjacent cysteines. The cytokine encoded by this gene displays chemotactic activity for T lymphocytes, but not monocytes or granulocytes. The product of this gene binds to chemokine receptors CCR4 and



CCR8. This chemokine plays important roles in T cell development in thymus as well as in trafficking and activation of mature T cells. [provided by RefSeq, Sep 2014],

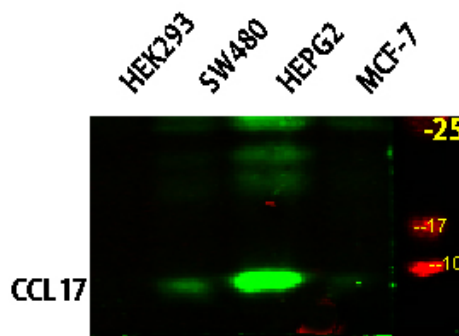
matters needing attention

Avoid repeated freezing and thawing!

Usage suggestions

This product can be used in immunological reaction related experiments. For more information, please consult technical personnel.

Products Images



Western blot analysis of various lysates, primary antibody was diluted at 1:1000, 4° over night, secondary antibody(cat: RS23920)was diluted at 1:10000, 37° 1hour.